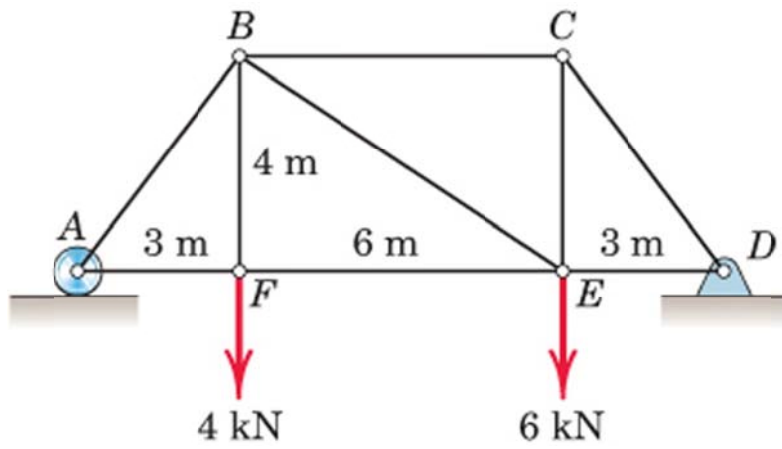


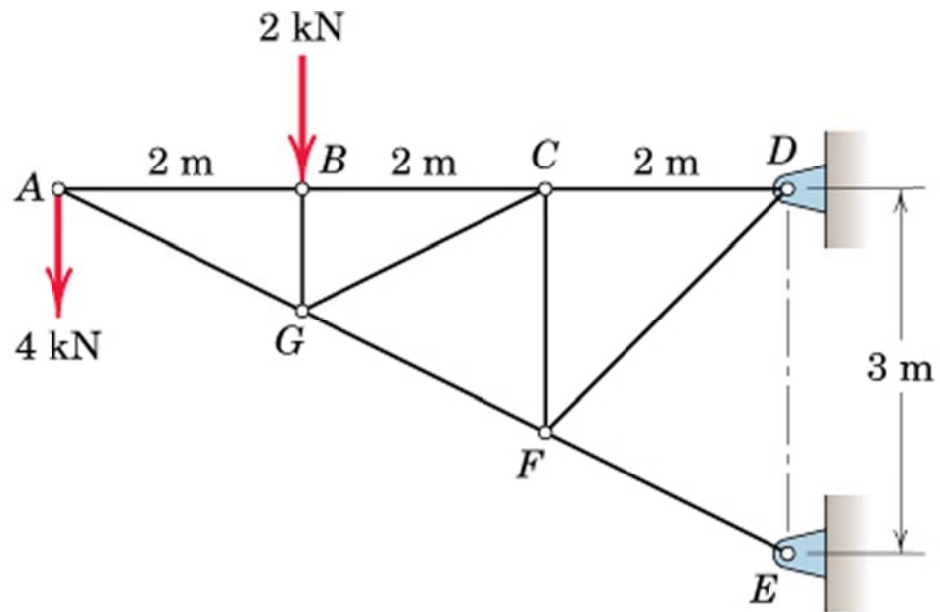
4/5

Determine the force in each member of the loaded truss.



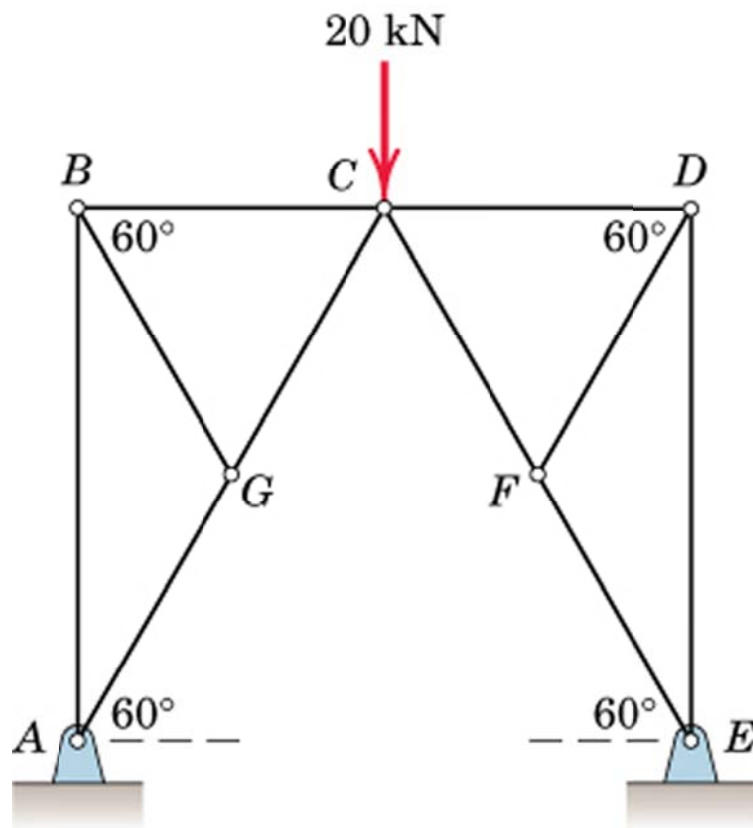
4/11

Calculate the forces in members CG and CF for the truss shown.



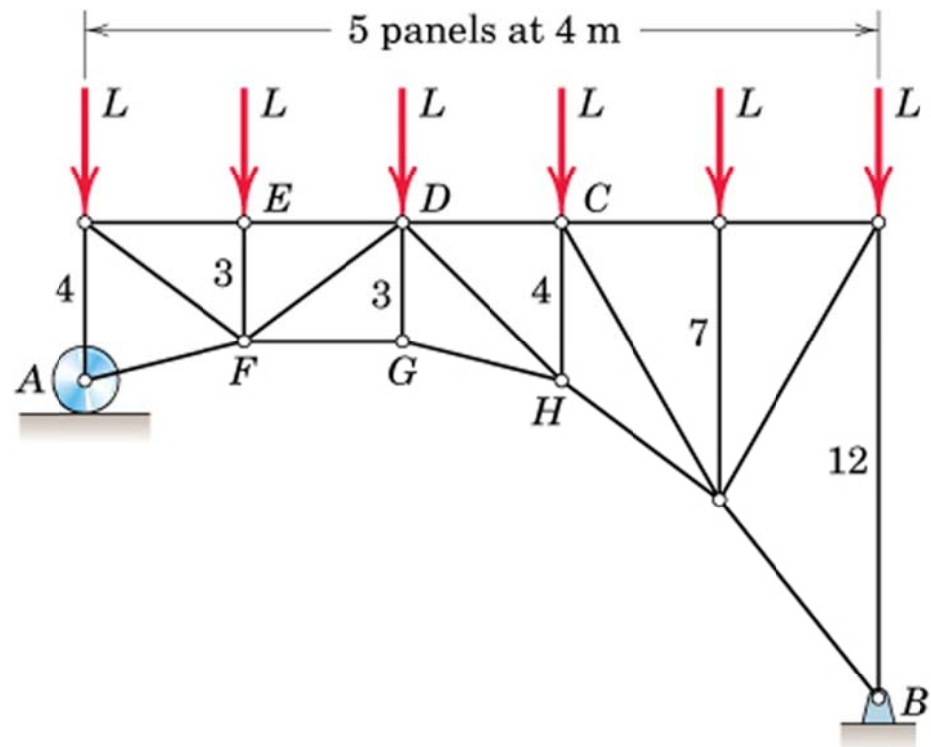
4/21

Determine the force in each member of the pair of trusses which support the 20-kN load at their common joint C.



4/33

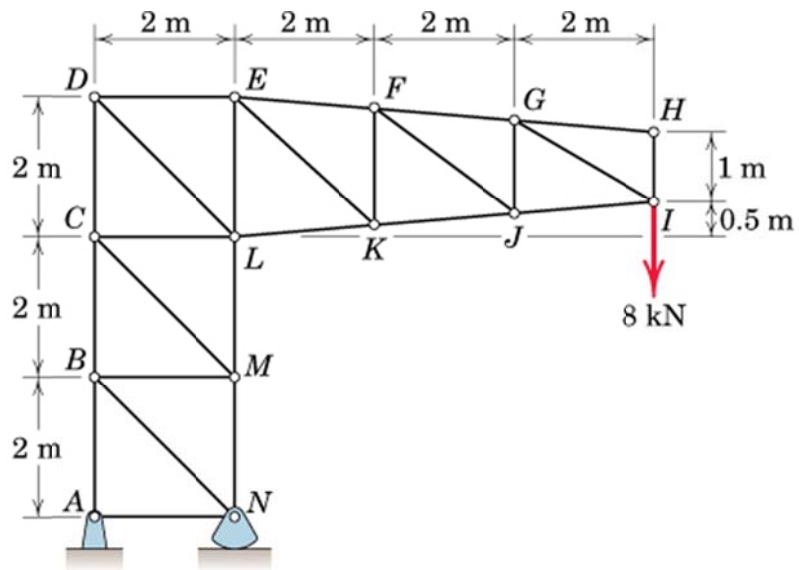
Determine the force in member DG of the loaded truss.



Dimensions in meters

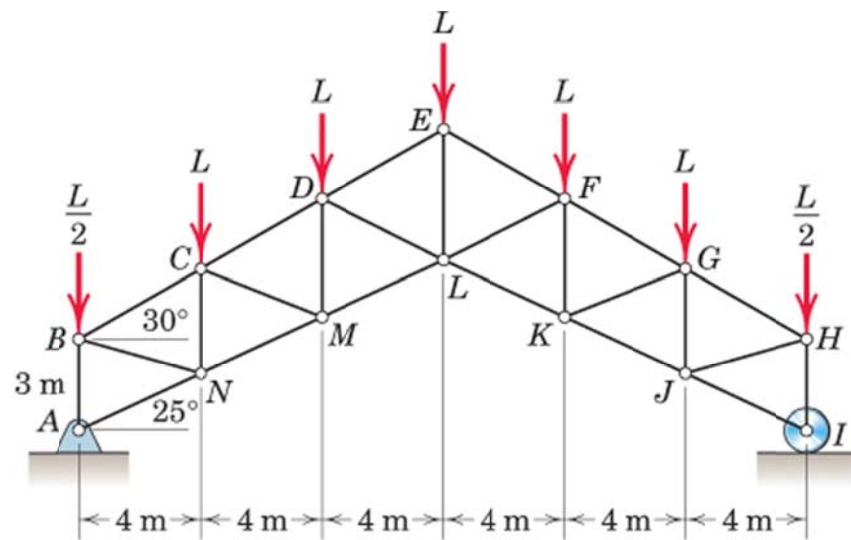
4/35

Determine the forces in members DE and DL.



4/43

Determine the forces in members DE, DL, LM, and EL of the loaded symmetrical truss.



4/45

Determine the forces in members CB, CG, and FG for the loaded truss without first calculating the force in any other member.

